

DYNAUDIO

Focus
User manual

- Introduction
 - High sound-pressure levels
 - Floor spikes
 - Speakers on stands
- Getting To Know Your Focus Speakers
- Unpacking Your Focus Speakers
- Installing and Positioning Your Focus Speakers
 - Installing Your Focus 10 Speakers
 - Installing Your Focus 30 and Focus 50 Speakers
 - Positioning Your Focus Speakers
- Connecting and Switching On Your Focus Speakers
 - Wi-Fi Network Connection
 - Dynaudio Set-Up and Control App in Playback Mode
 - Bluetooth Connection
 - WiSA Connection
 - Wired Audio Source Connections
 - Subwoofer Connection
 - Coaxial Output Connection
- Using and Controlling Your Focus Speakers
 - Speaker Activation and Standby
 - Playing Audio via Streaming Services
 - Indicator Colours
 - Front Grilles
 - Using the Dynaudio Set-Up and Control App With Network and Bluetooth Audio
 - Using the Dynaudio Set-Up and Control App With Internet Radio Stations
 - Using the Dynaudio Set-up and Control App with WiSA Audio
 - Using the Dynaudio Set-Up and Control App With Wired Audio
 - Using the Focus Remote Control
- Customising Focus Speaker Settings
 - Basic Settings
 - Advanced Settings
 - Subwoofer Settings

- Connections
- General Settings
- Connection Modes, Resets and Updates
 - Connecting Your Speakers to a Different Wi-Fi Network
 - Deleting the Entire Speaker Bluetooth Paired Device Memory
 - Re-Establishing a Wireless Connection Between the Primary and Client Speakers
 - Substituting the Existing Client Speaker With a Replacement
 - Resetting Your Focus Speakers to Their Factory Default State
 - Reconnecting the Remote Control
 - Firmware Updates
- Caring for Focus Speakers
 - Running-in
 - Maintenance
 - Warranty

Introduction

Welcome – and thank you for putting your music in our hands.

Back in 1977, Dynaudio's founder, Wilfried Ehrenholz, was dissatisfied by the hi-fi speakers he'd been listening to, so he began the Dynaudio story by building his own: mounting drivers made by other companies in modified off-the-shelf cabinets, and blending the systems with his own crossover designs.

But Wilfried still wasn't satisfied.

He came to realise that he could only get the speaker performance he aspired to if he designed and made as many components as possible himself. And we all know there's sometimes only one way to get something right: do it yourself.

Your new Dynaudio speakers have a direct link back to Wilfried's commitment to retaining control of all the vital components, design, engineering and manufacture.

And that, in today's interconnected and badge-engineered commercial world, makes Dynaudio a very unusual organisation.

This Dynaudio user manual will help you get the best from your speakers and should provide all the guidance you need. But if you have further questions, there are extensive support and FAQ resources available via the [Dynaudio website](#).

CAUTION!

High sound-pressure levels

Listening to high sound pressure levels over extended periods can damage hearing.

CAUTION!

Floor spikes

Some Dynaudio speakers and stands are equipped with floor spikes. Floor spikes can cause injury or damage sensitive surfaces if not handled carefully.

CAUTION!

Speakers on stands

Speakers mounted on floor stands should always be fixed to the stand top-plate by screws as described in the instructions included with the stands. Speakers mounted on stands without top-plate fixings can fall, which may result in damage or injury.

Note

To maintain the long-term aesthetic quality of your speakers, excessively warm, cold, or humid locations should be avoided. Similarly, direct sunlight or excessive artificial light can affect the colour of the natural wood veneers used on speaker cabinets.

Getting To Know Your Focus Speakers

The Dynaudio Focus range comprises three high-performance active wireless streaming stereo speaker systems: the Focus 10, the Focus 30 and the Focus 50.

The Focus 10 is intended for installation on stands, furniture units, shelves or wall brackets.

The Focus 30 and Focus 50 are floor-standing speakers with integrated feet.

All three Focus systems are capable of playing audio from a wide variety of streams and sources.

- Audio streams can be played via Wi-Fi, wired network, Bluetooth or WISA connections.
- Conventional wired audio sources can be connected via digital optical and coaxial, or analogue RCA phono input sockets.

Each pair of Focus speakers comprises...

- a **Primary** speaker that carries the wired connection sockets and
- the **Client** speaker.

The Primary and Client wirelessly connect to each other automatically on installation. Both the Primary and Client speakers require connection to mains power.

Note

WISA ("Wireless Speaker and Audio") is a multi-channel wireless audio broadcast technology that enables audio sources to broadcast up to 8 channels of high-resolution audio (up to 24 Bit / 96 kHz) simultaneously to compatible active speakers.

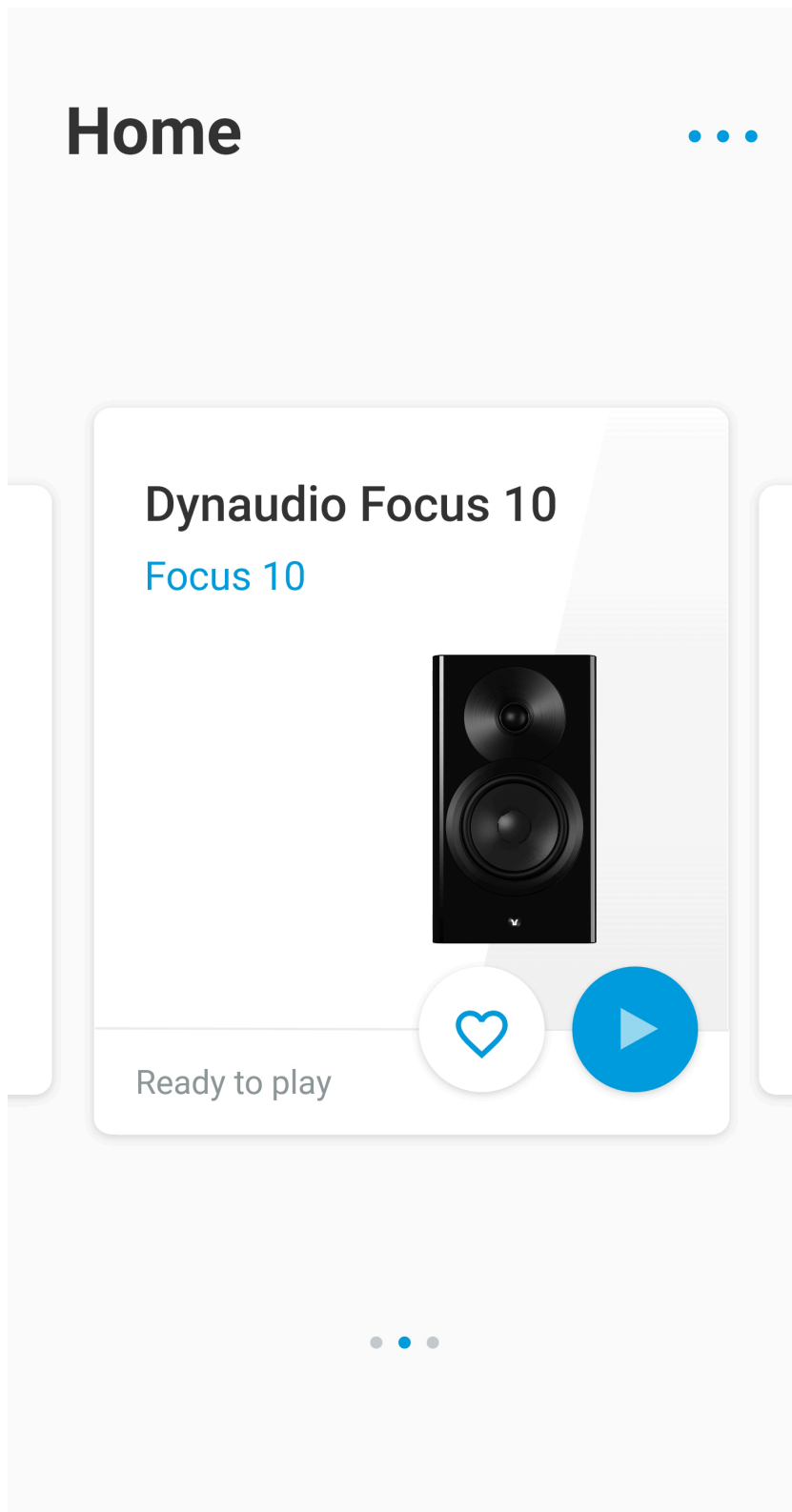


Illustration: Set-up and Control app: Home screen

Focus speakers are set up via the **Dynaudio Set-up and Control app**, available for iOS from the Apple App Store and for Android from the Google Play Store.

- The Dynaudio Set-up and Control app for iOS requires iOS version 11.0 or later.
- The Dynaudio Set-up and Control app for Android requires Android version 5.0 or later.

If you haven't already downloaded and installed the Dynaudio Set-up and Control app, you will need to do so in order to set up your Focus speakers.

In addition to using the Dynaudio Set-up and Control app, Focus speakers can be controlled using the supplied Bluetooth remote control.

Unpacking Your Focus Speakers

- Take care when unpacking your Focus speakers.
Be especially careful not to touch the bass and midrange driver cones.

Focus speakers are fitted with magnetically attached protection caps over their tweeter domes. **The protection caps must be removed before the speakers are used.** However, we recommend you leave them in place until you have completed installing the speakers.

Front grilles are not fitted to Focus speakers when shipped but are packed separately.

The grilles are held in place on the speaker front panels by magnets and simply need to be placed in position. The grilles should not be fitted until the tweeter protection caps have been removed.

Note

Focus speakers are supplied with mains cables appropriate to their sales territory. Contact your Dynaudio retailer or distributor if you require an alternative mains cable.

Note

We suggest that you keep your Focus packaging for possible future use. If this is not possible, please dispose of packaging responsibly, ensuring that recyclable components are sorted appropriately.

Installing and Positioning Your Focus Speakers

At Dynaudio we appreciate that speakers should fit with your environment and lifestyle, not the other way around, so Focus speakers make no unusual room positioning demands. Even so, every listening room has its own acoustic character and is uniquely furnished, so there are always choices to be made to help ensure that your speakers can give their best.

Don't be afraid to experiment with adjusting the speaker positioning, and listening carefully, until you have it just right to your ears.

Installing Your Focus 10 Speakers

Although Focus 10 speakers are primarily designed to be installed on speaker stands, they can also be placed on shelves or furniture units. Speaker stands, however, are likely to provide both the best performance and enable the greatest flexibility in positioning. Speaker stands will also place the speakers at the correct height – approximately head height when listening.

If you'd still rather install your speakers on shelves or furniture units, there are a few things to consider:

- Installing speakers on shelves or furniture units will lessen your ability to adjust speaker positioning. Make sure to read the "[Focus Speaker Positioning – General Layout](#)" section before deciding on shelf or bracket locations.
- Installing speakers on shelves or furniture units will result in increased bass volume and potentially less focussed stereo imaging due to reflections from the nearby back wall.
- The height of your speakers is important. They should be positioned approximately at head height when listening. Both speakers of the pair should be mounted at the same height.

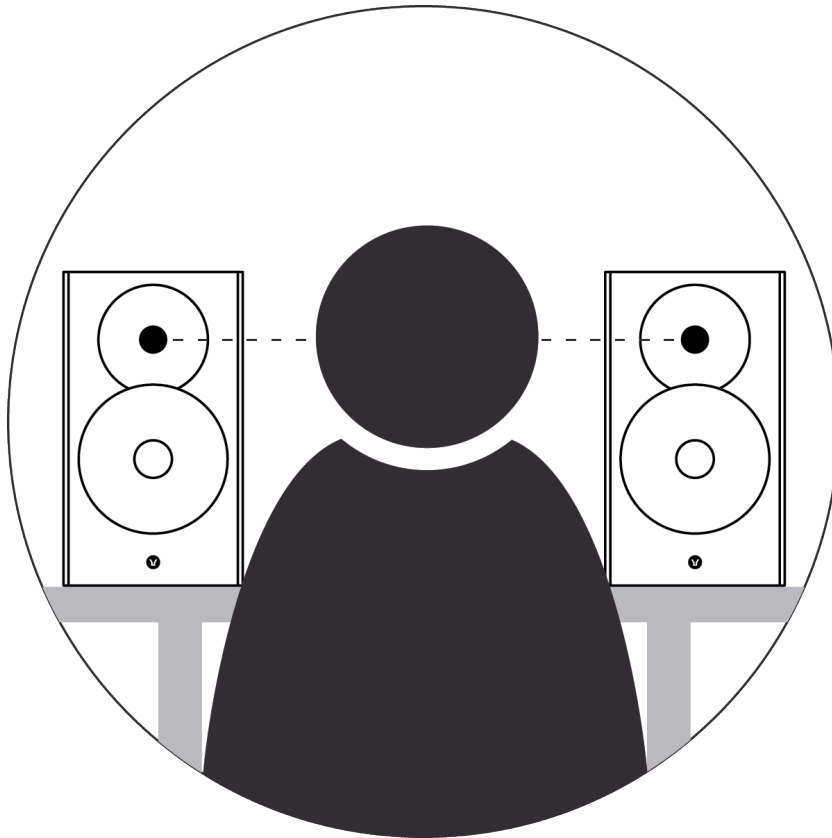


Illustration: Speaker at head height

- Shelves and furniture units should be easily able to support the weight of the speakers and be both rigid and non-resonant. Shelves attached to stud-work and plasterboard walls are unlikely to provide adequate strength or rigidity. If you're unsure of your wall's suitability, or of your ability to install shelf hardware, check with a qualified professional.
- Furniture that incorporates large unsupported panels might not be suitable for speaker mounting as the vibrations from the speakers can cause sympathetic panel vibrations. Similarly, locating speakers within furniture alcoves can result in a resonant air volume around and behind the speaker that could colour the sound.

Using Speakers Stands

We recommend the use of the [Dynaudio Stand 20](#) with your Focus 10 speakers. Similarly dimensioned stands from alternative manufacturers may be used.

- If you are to use Dynaudio speaker stands with your Focus 10 speakers, please follow the assembly instructions supplied with the speaker stands.
If you have lost the instructions, you can download them from the [support section of the Dynaudio website](#). Instructions for using the feet supplied with the stands are also available.

If you intend to use speaker stands from an alternative manufacturer, please follow the assembly instructions supplied with them.

We always recommend that speakers mounted on stands are fixed to the stand-top plates by screws. Speakers mounted on stands without top-plate fixings can fall, which may result in damage or injury.

Installing Your Focus 30 and Focus 50 Speakers

Focus 30 and Focus 50 speakers are supplied with foot components that require fitting to the underside of the speaker cabinets. The speakers should not be installed without the feet fitted.

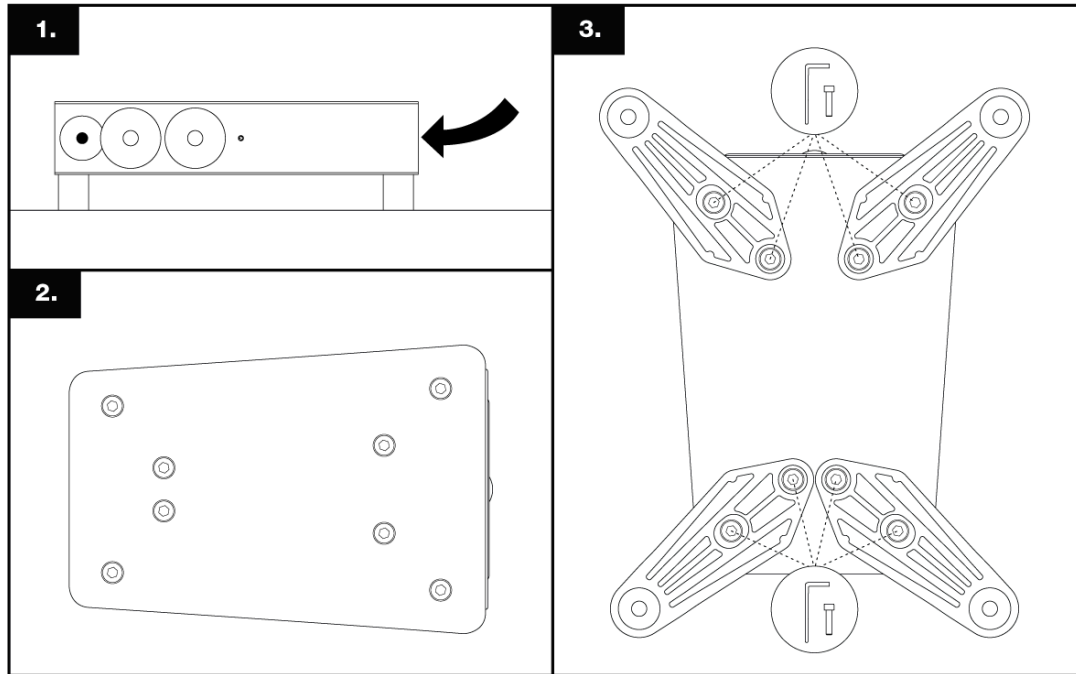


Illustration: Fitting Speaker Feet

Each foot is secured using two of the supplied screws and washers using the supplied Allen key. Make sure to tighten the screws securely and take great care not to damage the driver cones or tweeter domes when manoeuvring the speakers to fit the feet.

Focus 30 and Focus 50 speakers are also supplied with two floor options: spikes and rubber feet.

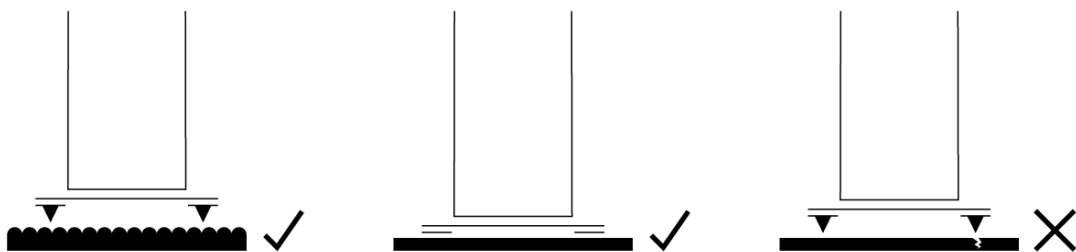


Illustration: Floor Spikes and Rubber Feet

Spikes are designed for use on carpets and rugs. They pierce the carpet or rug to rest on the floor surface beneath, providing the speaker or stand with a solid foundation. When using floor spikes, ensure that the spike length extends enough that the bottom of the speaker or stand is well clear of the carpet.

Spikes can also be used on non-carpeted floors with metallic discs (such as coins) placed between the spike tips and the floor. In this case, the length of spike extending beneath the speakers or stands should be minimised.

Rubber feet should be used when speakers or stands are used on uncovered wooden or tile floors. Make sure

the length of foot adjustment extending beneath the speakers or stands is minimised.

Spikes or rubber feet should be adjusted so that the speakers or stands are vertical and don't rock.

- Always take great care when installing floor spikes or when moving speakers or stands with floor spikes fitted.
- Never tilt a speaker or stand with floor spikes or rubber feet fitted so that its entire weight rests on just one or two spikes or feet.

Positioning Your Focus Speakers

Note

Both Client and Primary Focus speakers require mains power. Accordingly, the first thing you may need to consider when selecting speaker positions is proximity to mains power sockets.

Focus Speaker Positioning – General Layout

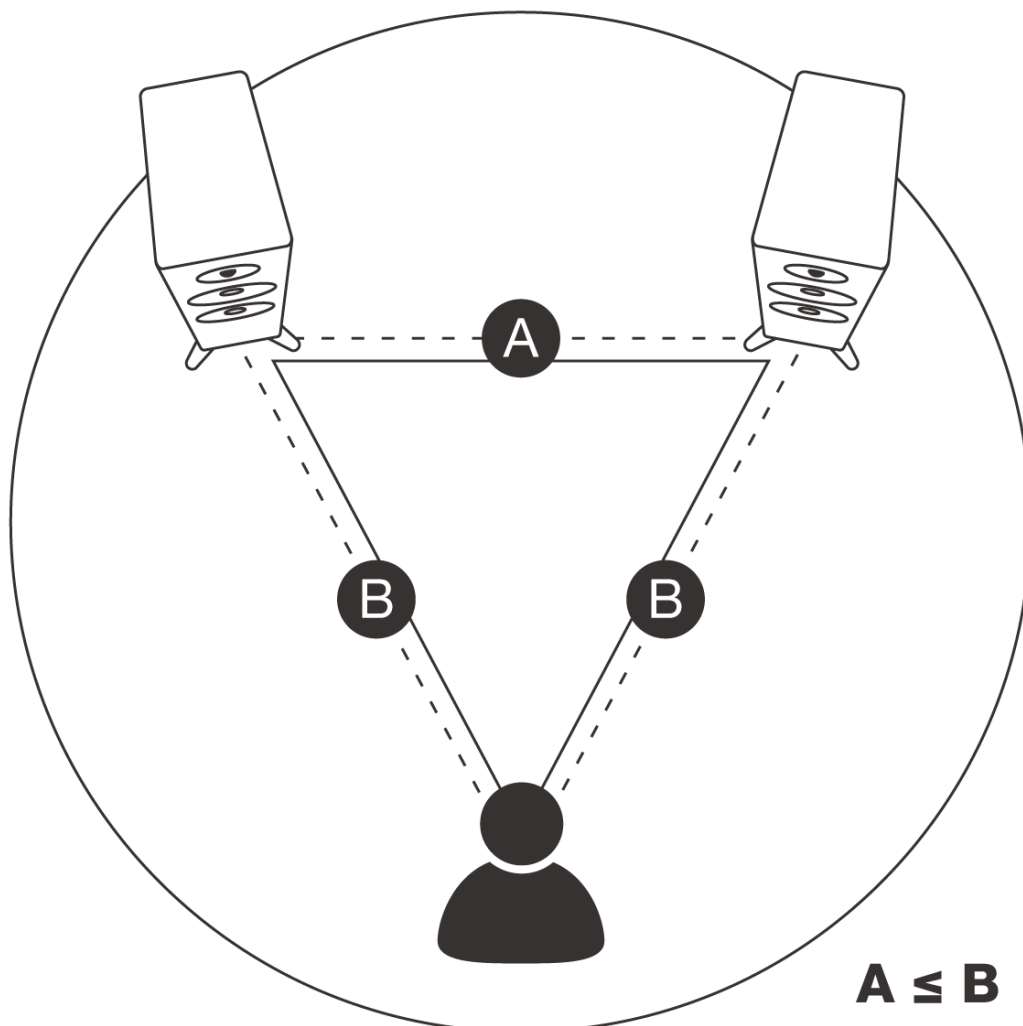


Illustration: Speaker Positioning

Your Focus speakers are best located along one wall of your listening room between 2 m

and 4 m (6 ft and 13 ft) apart.

- If the speakers are too close together, the stereo image will lack scale.
- If the speakers are too far apart, the image might have a weak central focus.

The distance from the loudspeakers to the listening area should be similar to, or slightly more than, their distance apart. The closer the listening area is to the loudspeakers, the closer the speakers can be to each other. Paying attention to the stereo image will help dictate optimum speaker positioning.

It is not necessary to angle the speakers inward towards the listening position, but you may find that doing so results in a tighter stereo image focus at the central listening position.

Focus Speaker Positioning – Room Effects

Every loudspeaker radiates sound energy not only forward but also to the side and, particularly at lower frequencies, to the rear. As a result, reflections from the room boundaries occur that interfere with the speaker's forward radiation. When loudspeakers are positioned too close to room boundaries, their performance is affected.

Even with your speakers placed away from room boundaries, the material and acoustic character of the boundaries will still have an effect on the sound. Try to ensure that immediate surroundings of each speaker have similar acoustic qualities. Different acoustic qualities would be heavy curtains and bare walls, for example.

The sound of any speaker will also be influenced by the furniture and other large objects within the listening room, and the material of its construction and wall covering. For example, a large room with little furniture and hard wall surfaces will result in a bright, diffuse sound, while a room with carpet, curtains and soft furnishings will result in a more focussed and less lively sound.

Dynaudio speakers are designed to perform at their best when positioned as far from any walls as possible.

Ideally, try to aim for a minimum distance of 50 cm (18 inches) from each speaker to any wall.

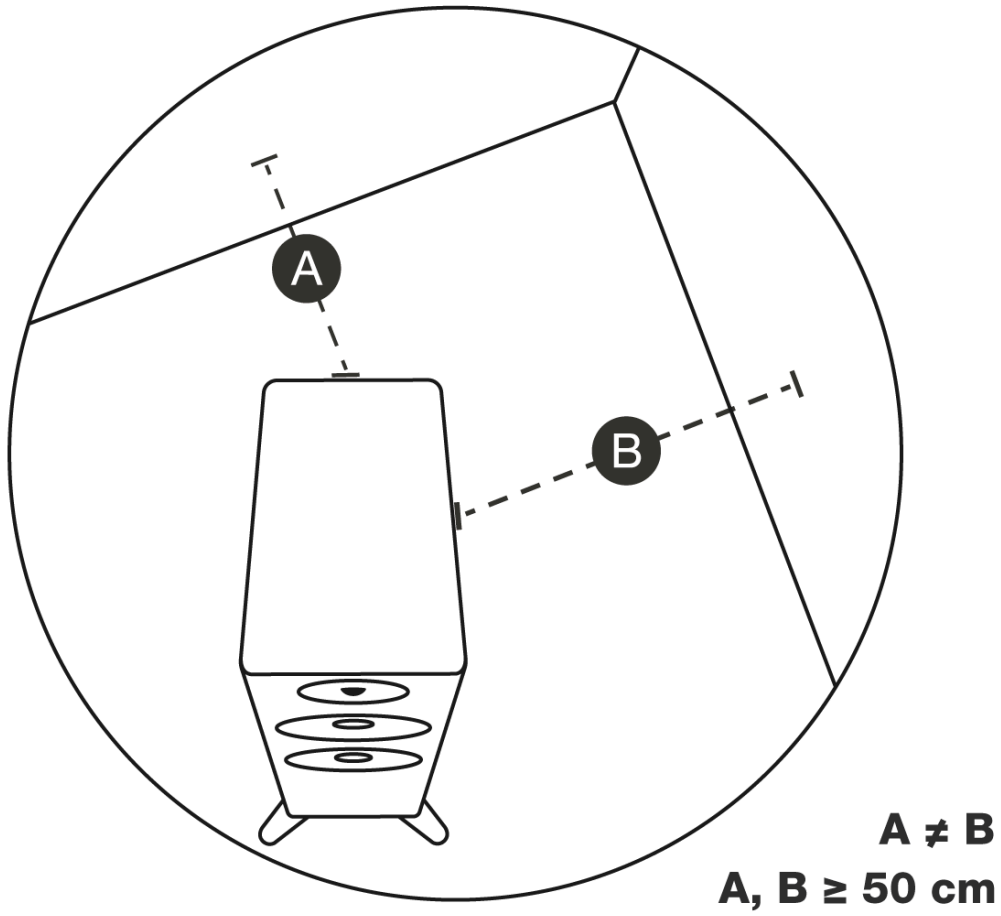


Illustration: Room Boundaries

Connecting and Switching On Your Focus Speakers

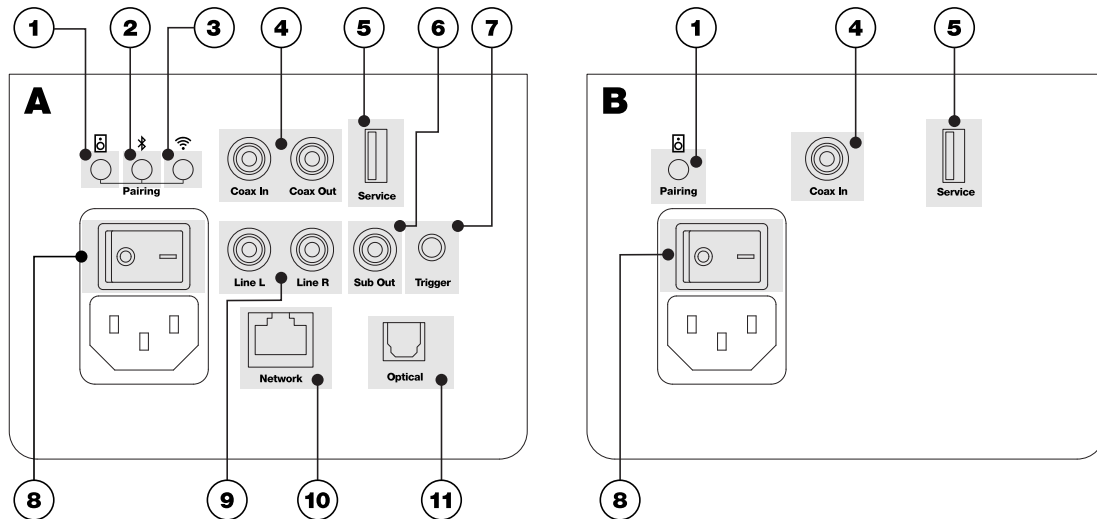


Illustration: Focus Speaker Sockets

- A: Primary Speaker
- B: Client Speaker
- 1: Speaker Pairing button
- 2: Bluetooth button
- 3: Wi-Fi button
- 4: Digital coaxial input and output
- 5: Service port
- 6: Subwoofer audio output
- 7: Trigger output
- 8: Power switch
- 9: Analogue line inputs
- 10: Ethernet socket
- 11: Digital optical input

Note

Before switching on your Focus speakers, download and install the Dynaudio Set-up and Control app on your iOS or Android device. Your iOS or Android device should be connected to the Wi-Fi network you wish to use with your Focus speakers.

- With your Focus speakers installed and in position, they can be connected to mains power using the supplied mains cables and switched-on (A-8 and B-8). See [Illustration: Focus Speaker Sockets and](#)

[Buttons](#). Both the Primary (A) and Client speakers (B) must be switched on.

Note

The meanings of all the Focus speaker front panel indicator colours and illumination patterns are described in the "Using and Controlling Your Focus Speakers" section of this manual.

Wi-Fi Network Connection

When first switched on, your Focus speakers will start up with their front panel indicators illuminated white. The Primary speaker will automatically connect wirelessly to the Client speaker, and after a short while, its front panel indicator will flash white to indicate Wi-Fi connection mode.

Note

The wireless connection between the Primary and Client speakers may take up to two minutes to become established.

Note

If your Focus speakers have been previously used, Wi-Fi connection mode may need to be started manually.

To start Wi-Fi connection mode manually, press and hold the Wi-Fi button (A-1) on the Primary speaker rear panel for three seconds. See [Illustration: Focus Speaker Sockets and Buttons](#).

Dynaudio Focus speakers that have been previously used may also have paired Bluetooth devices stored in memory. See the "Connection Modes, Resets and Updates" section of this manual for instructions on clearing the Bluetooth device memory.

1. With your Focus speakers in Wi-Fi connection mode, open the Dynaudio Set-up and Control app and tap on the Home screen "... " icon to initiate the "Add new speaker" procedure.
2. Follow the steps described in the app to connect your Dynaudio Focus speakers to your Wi-Fi network and add the speakers to the app. The Primary and Client speaker indicators will pulse slowly white to indicate that they are ready to play with Wi-Fi.

Note

Your Focus speakers will wait in Wi-Fi connection mode for 15 minutes, after which they will automatically return to unconnected mode if no network connection is made. The Primary and Client speaker indicators will pulse slowly yellow to indicate that they are ready to play without Wi-Fi.

Dynaudio Set-Up and Control App in Playback Mode

With your Focus speakers connected to your Wi-Fi network and the Internet, you can explore their features in the Dynaudio Set-up and Control app and begin to enjoy all your favourite Internet radio stations and music streaming services via their own apps.

You will also be able to play audio files or streams via AirPlay, Google Cast, Roon and compatible streaming or UPnP audio playback applications.

The "Using and Controlling Your Focus Speakers" section describes in more detail all the different ways to select and play audio streams and sources.

Note

In addition to connecting to your home network and the Internet via Wi-Fi, your Focus speakers can also connect using a cable to your network router. Use a standard Ethernet cable connected from the Primary speaker rear panel network socket to a free network socket on your router or a network switch. See [Illustration:](#)

Focus Speaker Sockets and Buttons.

You may need to switch the Primary Focus speaker off and on again to establish a wired network connection.

Bluetooth Connection

Your Focus speakers can be paired with and play audio from Bluetooth-equipped sources such as smartphones, tablets and computers.

To pair a Bluetooth device with your Focus speakers, the speakers must be switched to Bluetooth pairing mode.

1. Press and hold either...
 - the **Bluetooth** button (A-2) on the Primary speaker rear panel for three seconds or
 - the **Bluetooth** button on the Focus remote control for three seconds.

The indicators on both speakers will flash blue to indicate Bluetooth pairing mode.

1. Now open the Bluetooth settings screen on your mobile device and identify your Focus speakers ready for connection.
2. Select the speakers. After a short time, they will pair and connect to the Bluetooth device.

With your Focus speakers paired with and connected to your Bluetooth device, they will be available for audio playback from any compatible audio app.

If playback *doesn't* begin automatically, you can select Bluetooth from the Focus remote control using the Bluetooth button.

The Focus remote control's Play/Pause, Next and Previous buttons will also control the Bluetooth device playback.

Note

As long as a connected Bluetooth device is switched on and remains in Bluetooth range of the speakers, the Bluetooth device will remain connected unless...

- the speakers' input source is changed or
- the speakers are switched to Standby mode.

If a connected Bluetooth device goes out of range or is switched off, the device will disconnect from the speakers. The Bluetooth device will attempt to reconnect to the speakers when it comes back into range or when it is switched on again.

- You can disconnect a connected Bluetooth device...
 - from the device's Bluetooth settings screen or
 - from the Dynaudio Set-up and Control app Speaker Settings menu.

Note

Your Focus speakers can be paired with up to 10 Bluetooth devices simultaneously, but can only connect to and play from *one* Bluetooth device at a time.

If an 11th device is paired, the device that has been inactive the longest will be deleted from the speaker's Bluetooth memory.

Note

Your Focus speakers will wait in Bluetooth pairing mode for two minutes, after which they will automatically return to normal mode if no device is paired.

Note

The Focus Bluetooth input will not select automatically when a connected Bluetooth device begins audio playback. The Bluetooth input must be selected manually using either the Dynaudio Set-up and Control app or the Focus remote control.

WiSA Connection

WiSA ("Wireless Speaker and Audio") is a multi-channel wireless audio broadcast technology that enables audio sources to broadcast up to eight channels of high-resolution audio (up to 24 Bit / 96 kHz) simultaneously to compatible active speakers.

Your Focus speakers can play audio from WiSA compatible sources such as

- appropriately equipped televisions,
- hi-fi preamplifiers or streamers,
- games consoles, or
- stand-alone WiSA transmitters.

WiSA equipped sources will have their own on-screen or app-based setup menus that you will need to open and use to connect your Focus speakers.

- Make sure your Dynaudio Focus speakers are switched on (A-8 and B-8).
- Open the on-screen setup menu of the WiSA source device, or launch its app.
- Follow the steps required to add and connect new speakers.
You may need to specify the role (left, right, centre, etc) and channel (left or right) of your Dynaudio Focus speakers.

With your speakers connected via WiSA, you can stream audio playing on the source device to them via the WiSA button on the Focus remote control or by selecting the WiSA input in the Set-up and Control app.

Note

The Focus remote control cannot be used to control Play/Pause, Next and Previous functions with WiSA audio streams.

Wired Audio Source Connections

Your Focus speakers can play audio from a variety of conventional audio sources such as

- televisions,
- CD players,
- games consoles and
- preamplifiers

via wired connections to the rear panel sockets of the Primary speaker:

- Digital optical – TOSLINK (A-11)

- Digital coaxial – S/PDIF (A-4)
- Stereo phono analogue line input sockets (A-9)

See [Illustration: Focus Speaker Sockets](#)

- To play audio from a **preamplifier or CD player with analogue stereo outputs**, connect a stereo phono cable from the source device's output sockets to the Focus speaker's analogue line input sockets (A-9 – “Line L” and “Line R”).
- To play audio from a **CD player, television or games console with an optical digital output**, connect a digital optical (TOSLINK) cable from the source device's output socket to the Focus speaker's digital optical input socket (A-11 – “Optical”).
- To play audio from a **CD player, television or games console with a coaxial digital output**, connect a phono cable from the source device's output socket to the Focus speaker's digital coaxial input socket (“Coax In”).

Note

Always use good quality audio cables with your Focus speakers. Your Dynaudio retailer will be able to advise on cable choice.

Note

The USB sockets on your Focus speaker's rear panels labelled “Service” (A-5 and B-5) are for service and diagnostic use only. They cannot be used as audio inputs.

With conventional wired sources connected to your Focus speakers, you can select them...

- via the Focus remote control buttons or
- by selecting inputs in the Set-up and Control app. See the “Using and Controlling Your Focus Speakers” section.

Note

The Focus remote control cannot be used to control Play/Pause, Next and Previous functions with wired sources.

Subwoofer Connection

You can connect an active subwoofer to your Focus speakers to enhance their low frequency performance. We recommend using a [Dynaudio model](#), but subwoofers from alternative manufacturers may also be used.

1. To use a subwoofer with your Focus speakers, connect a phono cable from the “Subwoofer” output socket (A-6) on the Focus Primary speaker to your subwoofer's line input socket. For the location of the Subwoofer output socket, see [Illustration: Focus Speaker Sockets](#).
2. Open the Dynaudio Set-up and Control app.
3. Select the speaker to which the subwoofer is to be connected.
4. Select “Advanced Settings” from the Settings menu.
5. Switch on Enable Subwoofer.
Enabling the subwoofer switches on the Focus rear panel subwoofer audio output and reduces Focus bass level to enable integration with a subwoofer.
6. Read the subwoofer user manual for information on adjusting its controls. If the subwoofer is equipped

with a configurable low-pass filter it should be either fully disengaged (bypassed) or set to its highest frequency. This is because the Focus subwoofer audio output already has an 80 Hz low-pass filter applied.

7. Use the subwoofer's level control to set an appropriate bass volume level for the system as a whole. It's usually better to set the subwoofer level conservatively. If you are always aware of the subwoofer playing when listening to music, it is probably too loud.

Note

Focus speakers are fitted with a rear panel trigger output (A-7) that enables them to control the standby mode of compatible Dynaudio subwoofers.

1. Connect a mini-jack cable from the Focus Primary speaker's "Trigger" socket to the Dynaudio subwoofer's "Trigger" socket.

The subwoofer will then copy the Focus speaker standby behaviour.

Coaxial Output Connection

The Focus Primary speaker is fitted with a coaxial digital output that can be used to enable an alternative wired connection to the Client speaker.

A wired connection between the speakers offers digital audio resolution up to 196 kHz / 24 Bit. You may wish to take advantage of this capability when playing very high resolution audio.

1. To connect the Focus Primary and Client speakers, use a phono cable to connect the "Coax Out" socket (A-4) of the Primary speaker to the "Coax In" socket (B-4) of the Client speaker.
The wired connection between the speakers will automatically take over from the wireless connection. This can be confirmed via the Set-up and Control app: Settings > Speaker Info.

For the location of the coaxial input and output sockets, see [Illustration: Focus Speaker Sockets](#).

Note

Always use good quality audio cables with your Focus speakers. Your Dynaudio retailer will be able to advise on cable choice.

Using and Controlling Your Focus Speakers

With your Focus speakers connected...

- to your home network via Wi-Fi or Ethernet,
- to a Bluetooth audio source, and perhaps also
- to one or more wired audio sources,

...you're ready to begin enjoying them.

Speaker Activation and Standby

- Your Focus speakers will switch on from Standby mode automatically when audio plays from any source.
- The speakers will switch back to Standby mode automatically after twenty minutes of silence.
- The speakers can also be switched to Standby mode manually by pressing the Standby button on the remote control or tapping the Set-up and Control app's Standby icon.
- The speakers can be switched on from Standby manually by pressing any button on the remote control or using the Set-up and Control app's Standby icon.

Note

Should you wish to switch off your Focus speakers fully, rather than leave them in Standby mode, you can do so using the power switches (A-8 and B-8) on the rear panels.

The speakers will retain all their settings when switched off and reconnect to Wi-Fi and any available paired Bluetooth device when switched back on.

The next few sections and paragraphs describe a variety of ways you can control and select audio to play on your Focus speakers, but as you become more familiar with them, and how they suit your lifestyle, you'll find your own preferences. There's no "correct" way of doing things, only your way.

Playing Audio via Streaming Services

You can stream audio to your Focus speakers via a variety of streaming services using a range of streaming protocols – Bluetooth, AirPlay and Chromecast for example.

Some streaming services can use multiple streaming protocols, and it is up to you which one is used on any particular occasion.

The following paragraphs describe the music streaming services and how they can be used.

Streaming via Roon

[Roon](#) is a subscription-based music streaming application that is able to search for and consolidate all the music files stored on your home computers and network storage to create a rich, searchable library complete with comprehensive metadata.

To use Roon with your Focus speakers:

1. Open the Roon app either on a desktop, laptop or mobile device.
2. Select the Focus speakers as the playback zone.

Streaming via Apple AirPlay 2

[AirPlay](#) is Apple's media streaming technology. Any Mac OS or iOS app that displays the AirPlay icon will be able to stream audio to Focus speakers connected to the same network.

To stream audio to your Focus speakers via AirPlay:

1. Open an AirPlay compatible app and start playback.
2. Next, select or tap on the AirPlay icon to open the list of available AirPlay devices.
3. Select your Focus speakers and the AirPlay stream will switch to the speakers.

If multiple AirPlay devices are available, you can select more than one for simultaneous playback in different rooms.

Streaming via Google Chromecast

[Chromecast](#) is Google's media streaming technology. Media running on any desktop, laptop or mobile device that displays the Chromecast icon will be able to stream audio to Focus speakers connected to the same network.

To stream audio to your Focus speakers via Chromecast:

1. Open a Chromecast compatible app and start playback.
2. Next, select or tap on the Chromecast icon to open the list of available Chromecast devices.
3. Select your Focus speakers and the Chromecast stream will switch to the speakers.

Note

Chromecast streaming from an iOS device will require that a Chromecast connection is initially established via the Google Home app.

Streaming via Spotify Connect

Use your phone, tablet or computer as a remote control for Spotify. Go to spotify.com/connect to learn how.

Spotify Connect enables your Focus Speakers to play Spotify streams from desktop, laptop or mobile devices running the Spotify app.

To play a Spotify stream on your Focus speakers:

1. Open the Spotify app on your desktop, laptop or mobile device and start the stream playback.
2. Next, select or tap on the Spotify Connect icon to open the list of available Spotify Connect devices.
3. Select your Focus speakers, and the Spotify stream will switch to the speakers.

Note

Spotify playlists can be added to the currently selected speaker's favourites by tapping the heart icon in the Set-up and Control app. You can assign up to 3 favourites to a speaker. These favorites are assigned to preset buttons 1, 2 and 3 of the remote control.

Note

The Spotify Software is subject to third party licences found here: developer.spotify.com/legal/third-party-licenses/

Streaming via Tidal

Tidal Connect enables your Focus Speakers to play Tidal streams from desktop, laptop or mobile devices running the Tidal app.

To play a Tidal stream on your Focus speakers:

1. Open the Tidal app on your desktop, laptop or mobile device and start the stream playback.

2. Next, select or tap on the Tidal Connect icon to open the list of available Tidal Connect devices.
3. Select your Focus speakers, and the Tidal stream will switch to the speakers.

Streaming via QPlay

QPlay enables your Focus Speakers to play QQ Music streams from desktop, laptop or mobile devices running the QQ Music app.

To play a QQ Music stream on your Focus speakers:

1. Open the QQ Music app on your desktop, laptop or mobile device and start the stream playback.
2. Next, select or tap on the QPlay icon to open the list of available QPlay devices.
3. Select your Focus speakers, and the QQ stream will switch to the speakers.

Streaming via UPnP or DLNA

Your Focus speakers can play audio streams from any UPnP or DLNA compatible network source and playback app.

To play a UPnP or DLNA stream on your Focus speakers:

1. Open the playback app's output settings menu
2. Select your Focus speakers.

When audio is subsequently selected within the playback app, it will play via your Focus speakers.

Streaming via Bluetooth

You can play audio streams on your Focus speakers via a Bluetooth connection from any paired desktop, laptop or mobile device running a Bluetooth compatible audio playback app.

To play a Bluetooth stream on your Focus speakers:

1. With the playback device paired and connected to your Focus speakers, open the playback app.
2. Select your Focus speakers for Bluetooth playback.

The Focus Bluetooth input will not select automatically when a connected Bluetooth device begins audio playback. The Bluetooth input must be selected manually using either the Dynaudio Set-up and Control app or the Focus remote control.

Indicator Colours

The Focus speaker front panel indicators display a variety of colours and illumination patterns to indicate different operational and setup information. This is described in the following table.

Colour	Style	Meaning
White	Constant, bright	Speakers starting
Off		Speakers in Standby mode
White	Pulsing, bright	Wi-Fi/network connected, ready to play audio
Yellow	Pulsing, bright	Wi-Fi/network disconnected, ready to play audio
White	Temporary, bright	Remote control command received
White	Constant, dim	Playing audio
White	Flashing, bright	Wi-Fi connection mode

Focus Indicator Colours

Colour	Style	Meaning
Blue	Flashing, bright	Bluetooth pairing mode
Blue	Temporary, bright	Automatic grille EQ engaged or disengaged
Green	Constant, bright	Firmware update underway
White	Fast flashing, bright	Factory reset underway
Red	Fast flashing, bright	Error (restart speaker)
Orange	Flashing, bright	Speaker pairing mode
Orange	Constant, bright	Speaker connection interrupted

Note

- "Flashing" describes switching on and off once every second.
- "Fast Flashing" describes switching on and off four times a second.
- "Pulsing" describes brightening and dimming once every two seconds.

Front Grilles

Focus speakers have magnetically attached front grilles that can be easily removed or replaced. A grille sensing feature automatically adjusts the sound balance of the speakers in response to grille presence or absence.

The use of grilles is a matter of personal preference, however there are two factors to consider:

- Grilles are designed to have a minimal influence on speaker performance, however you may find sound quality to be marginally improved without them. You may like to remove the grilles for concentrated listening and replace them at other times.
- Driver cones and tweeter domes are delicate and can easily be damaged. If you have young children or pets in your home, the grilles are perhaps best left fitted.

Using the Dynaudio Set-Up and Control App With Network and Bluetooth Audio

- When using your Focus speakers to play **audio from your mobile device or computer**, via Bluetooth or your home network, the audio must be selected initially from the playback app; Spotify, Apple Music or Roon for example.
- You can then use either the playback app or the Dynaudio Set-up and Control app for play/pause, next, previous, volume and mute functions.

Using the Dynaudio Set-Up and Control App With Internet Radio Stations

Internet radio stations can be played either from a dedicated internet radio app or directly from the Dynaudio Set-up and Control app.

1. Open the Dynaudio Set-up and Control app.
2. Click the Note icon to browse Internet radio stations and podcasts.
3. If you find an Internet radio station or podcast that you would like to add to the currently selected speaker's favourites, tap the heart icon. You can assign up to 3 Internet radio stations to a speaker. These favorites are assigned to preset buttons 1, 2 and 3 of the remote control.

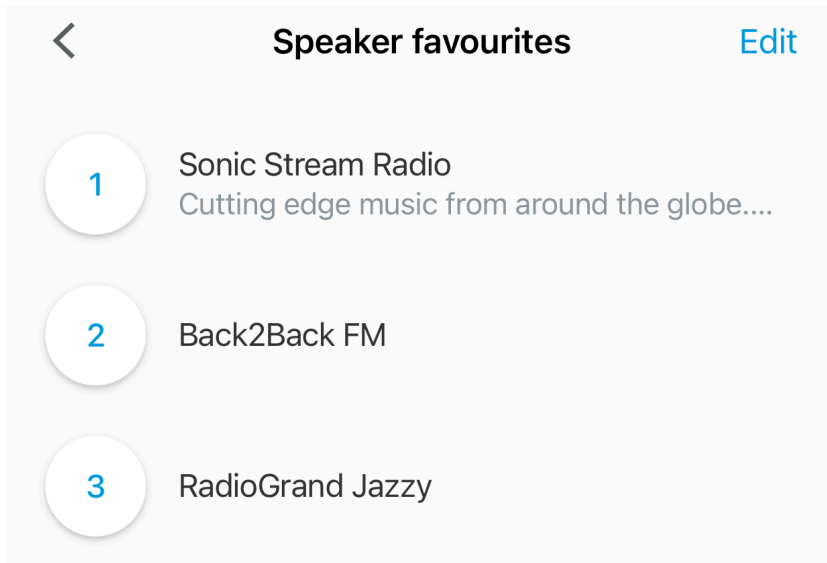


Illustration: Set-up and Control app: Favourites

Using the Dynaudio Set-up and Control App with WiSA Audio

When using your Focus speakers to play audio from a WiSA source such as a television set, please note:

- The Dynaudio Set-up and Control app can be used only for these functions:
 - Input selection
 - Volume control
 - Mute/Unmute
- The television remote control or its app is used for these functions:
 - Play/Pause
 - Next
 - Previous

Note

If you wish to use the WiSA source volume control alone, your Focus speakers can be set to Fixed volume mode. This is described in the "Customising Focus Speaker Settings" section of this manual.

Using the Dynaudio Set-Up and Control App With Wired Audio

When using your Focus speakers to play audio from a wired source, such as a CD player or television, please note:

- The Dynaudio Set-up and Control app can be used only for these functions:
 - Input selection
 - Volume control
 - Mute/Unmute
- The wired source's remote control or its app is used for these functions:

- Play/Pause
- Next
- Previous

Using the Focus Remote Control

The Focus remote control can be used to...

- select signal sources
- operate play/pause, next, previous and volume/mute functions
- select stored favourite presets.

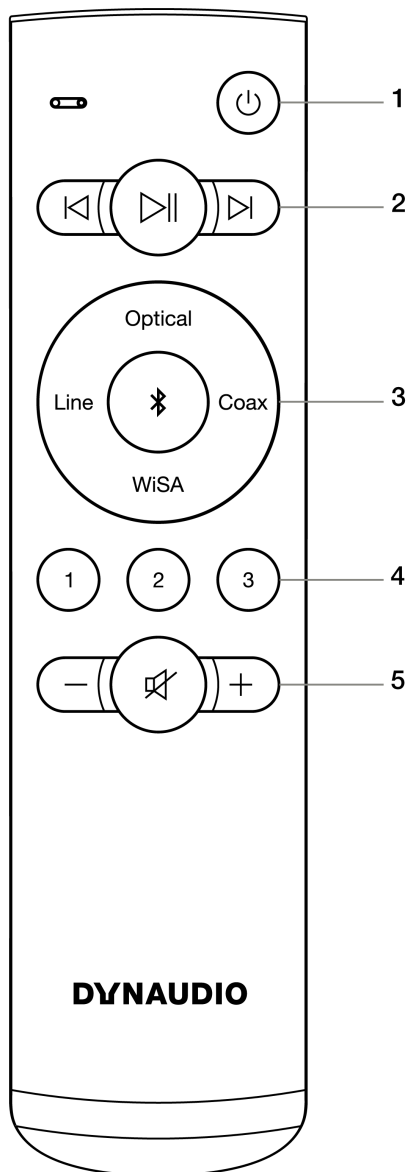


Illustration: Remote control

1. Standby

2. Previous • Play/Pause • Next
3. Input selection
4. Internet radio presets
5. Volume down • Mute/Un-mute • Volume up

For a description of the remote control buttons and their functions, see the following paragraphs.

Standby

Use this button to switch the Focus speaker into and out of Standby mode.

Previous, Play/Pause, Next

Use these buttons to play or pause the selected track and select the previous or next track.

Note

Play/pause next and previous functions do not operate with WiSA or wired audio sources.

Input Selection

Use these buttons to select the Digital optical, Digital coaxial, WiSA, Analogue line and Bluetooth inputs.

Note

Network streamed audio has priority over Bluetooth, wired and WiSA inputs.

Internet Radio Presets

Use this button to select Internet radio station presets.

Note

Three favourites can be stored as presets via the Dynaudio Set-up and Control app.

Volume down • Mute/Un-mute • Volume up

Use these buttons to control volume and mute/unmute the speakers.

The remote control incorporates two hidden “housekeeping” functions:

Bluetooth Pairing Mode

To switch Focus speakers to Bluetooth pairing mode, press and hold the Bluetooth button on the remote control for three seconds.

Resetting the Remote Control

- To reset the remote control, press and hold the preset 1 and 3 buttons until the remote control indicator flash green. Now press and hold the Primary speaker rear panel Bluetooth button (A-2) for three seconds to initiate pairing mode.
The remote control will restart and reconnect to the speakers. The remote control indicator will flash while pairing is underway. The speakers will play a confirmation sound when pairing is complete.

Pairing a Replacement Focus Remote Control With Your Speakers

1. Insert the battery into the remote control.
2. While the remote control's LED is flashing green, press and hold the Primary speaker rear panel Bluetooth button (A-2) for three seconds.
After a short time, the remote control and the speakers will be paired. The speakers will play a confirmation sound when pairing is complete.

Customising Focus Speaker Settings

The **Dynaudio Set-up and Control app** enables a variety of Focus speaker custom settings to be configured. These are described in the following paragraphs.

To start, open the Set-up and Control app, select the speakers by tapping their icon in the Home screen, and then tap on the Settings icon. The following menu of items will be displayed.

Basic Settings

Set primary and client

Enables left or right channel designation to be applied to the Primary and Client speaker.

Room Optimisation

Enables “neutral”, “near wall” and “corner” bass equalisation options to be selected independently for the Primary and Client speakers.

Near wall

The “near wall” option introduces bass attenuation to compensate for the boost that results from placing speakers near room boundaries.

Neutral

The “Neutral” option is the default, un-equalised frequency response.

Corner

The “corner” option introduces bass attenuation to compensate for the boost that results from placing speakers in room corners.

Note

You can use different room optimisation settings for the left and right speaker, but a better option is to try and arrange the speakers in your room so that their location with respect to room boundaries is similar.

Frequency Balance

Enables “bright”, “neutral” and “dark” tonal equalisation options to be applied to both speakers.

Bright

The “Bright” option applies a mild boost to high frequencies that you may find preferable, particularly if your listening room includes carpets and soft furnishings.

Dark

The “Dark” option applies an equivalent cut to high frequencies that may suit listening rooms that feature tiled floors and uncovered windows.

Neutral

The “Neutral” option is the default, un-equalised frequency response.

Dirac Live

Your Focus speakers are equipped to use Dirac Live® Room Correction technology to optimise their performance for the acoustic characteristics of your listening room. More information on using Dirac Live can be found at www.dirac.com/live.

Speaker Finish

Select the finish colour that corresponds to your Focus speakers.

Start-up Settings

Two speaker start-up modes are available. 1. Energy-saving mode minimises power consumption when the speakers are in Standby mode however they will take a little longer to start-up. 1. Quick Start-up mode minimises

any delay between start-up from Standby mode and audio playing, but results in higher Stand by power consumption.

Advanced Settings

The Advanced Settings menu provides access to the following options:

Analogue input sensitivity

Enables the Focus speaker analogue input sensitivity to be matched with the connected analogue source and its output level. Setting the speaker input sensitivity appropriately ensures its input is driven properly. The input sensitivity can be set to

- -6 dB: Select -6 dB if the source has a high output level.
- 0 dB: Select 0 dB if the source has a medium output level.
- +6 dB: Select +6 dB if the source has a low output level.

Fixed volume

Disables Focus volume control functions and sets the speakers to full volume. This function is useful if an audio system or television to which the Focus speakers are connected already includes volume control. Only engage fixed volume if alternative volume control is in place.

Subwoofer Settings

Enable Subwoofer

Selecting "Enable Subwoofer" switches on the Focus rear panel subwoofer audio output and applies an 80 Hz high-pass filter to the Focus bass output to enable acoustic subwoofer integration.

Grille EQ Status

The use of front grilles with Focus speakers results in a slight reduction in high frequency output. When a front grille is mounted, automatic grille equalisation applies an appropriate high-frequency boost.

Connections

Wi-Fi

The Wi-Fi screen displays the currently connected Wi-Fi network.

You can also remove (forget) the current network from this screen.

Bluetooth

The Bluetooth screen displays the currently paired Bluetooth devices.

You can also activate Bluetooth pairing mode from this screen.

WiSA

This screen displays the WiSA connection status for the Focus Primary and Client speakers.

You can also set the WiSA connection sample rate to either 48 kHz or 96 kHz.

A higher sample rate connection between the speakers may be appropriate when playing high-resolution material, but is unnecessary when playing CDs or standard resolution streamed audio. Additionally, depending on the radio frequency environment in your home, you may find the 48 kHz option results in a more reliable inter-speaker connection.

General Settings

Speaker Info

This screen displays the following information:

- Interspeaker connection method

- Remote controller connection status
- Module IDs for Primary and Client speakers
- Firmware version for Primary and Client speakers
- IP address
- Wi-Fi MAC address
- Bluetooth MAC address
- Ethernet MAC address

You can also restore the speakers to the Factory settings from this screen.

In the Android version of the Set-up and Control app, you can also change the speaker names.

Firmware Updates

This screen displays the current firmware version of your Dynaudio Focus speakers.

- Tap "Check for updates" to see if a newer firmware version for your speakers is available.

Connection Modes, Resets and Updates

You may need to set your Dynaudio Focus speakers to connection or pairing mode, or to reset them. You can use both the remote control and the Dynaudio Set-up and Control app to activate these features.

Note

For the speaker rear panel buttons referred to in the following paragraphs, see “Switching On and Connecting Your Focus Speakers”.

Connecting Your Speakers to a Different Wi-Fi Network

1. Press and hold the Wi-Fi button (A-3) on the rear panel of the Primary speaker for three seconds to instigate Wi-Fi connection mode.
2. Open the Dynaudio Set-up and Control app on a device connected to the desired Wi-Fi network.
3. Tap the “...” icon on the app Home screen to initiate the “Add new speaker” procedure.

Using Apple AirPlay or Google Home for Setup

In addition to connecting your Focus speakers to your Wi-Fi network using the Dynaudio Set-up and Control app, it is also possible to manage the connection process using either

- AirPlay setup on iOS devices or
- the Google Home app on Android or iOS devices.

Deleting the Entire Speaker Bluetooth Paired Device Memory

1. Press and hold the Primary speaker rear panel Bluetooth button (A-2) for ten seconds.

Note

If you only need to *edit* the paired device memory, this can be done via the Set-up and Control app Settings menu.

Re-Establishing a Wireless Connection Between the Primary and Client Speakers

1. With both speakers switched on, press and hold the Speaker Pairing button (B-1) on the rear panel of the Client speaker for three seconds.
2. If connection fails, press and hold the Speaker Pairing button on the rear panel of the Primary speaker (A-1) for three seconds.
3. If the wireless inter-speaker connection still fails, switch both speakers off and back on again (A-8 and B-8).

Substituting the Existing Client Speaker With a Replacement

1. With both speakers switched on (A-8 and B-8), press and hold the Speaker Pairing button (A-1) on the rear panel of the Primary speaker for three seconds.
2. If the wireless inter-speaker connection still fails, switch both speakers off and back on again.

Resetting Your Focus Speakers to Their Factory Default State

1. Press and hold the Speaker Pairing and Wi-Fi buttons (A-1 and A-3) on the rear panel of the Primary

speaker simultaneously for ten seconds.

As the Primary speaker restarts, it will automatically connect to the Client speaker and then enter Wi-Fi connection mode.

If the speakers are connected to your Wi-Fi network, they can also be reset via the Set-up and Control app:

1. Go to Settings > Speaker Info.
2. Tap "Factory reset".

Note

The circumstances in which your Focus speakers need to be reset may include the following:

- The speakers are to be used by a new owner in a different listening space.
- You wish to repeat the Focus speaker installation process.
- You have been advised to reset the speakers by Dynaudio or your Dynaudio retailer.
- You wish to return your Focus speakers to their unused condition.

The Focus remote control will require re-connection following the speaker factory reset.

Reconnecting the Remote Control

1. Press and hold the Bluetooth button (A-2) on the rear panel of the Primary speaker for three seconds. The indicators on both speakers will flash blue to indicate Bluetooth pairing mode.
2. Make sure the remote control has a battery fitted, then press and hold its Preset 1 and 3 buttons simultaneously until its indicator flashes. When you release the buttons, the remote control will reset and automatically enter Bluetooth pairing mode.

After a short time, the remote control and the speakers will be paired. The speakers will play a confirmation sound when pairing is complete.

Note

The circumstances in which your Focus remote control needs to be reset may include the following:

- The remote control is to be used with a different pair of Focus speakers.
- You wish to repeat the Focus speaker installation process.
- You have been advised to reset the remote control by Dynaudio or your Dynaudio retailer.

Firmware Updates

The Dynaudio Set-up and Control app will show a notification if new speaker firmware is available for installation.

You can also manually check for a new firmware version using the Set-up and Control app:

1. Go to Settings > Firmware updates.
2. Tap "Check for updates".
3. If an update is available, follow the Set-up and Control app's instructions to update the speaker firmware.

Caring for Focus Speakers

Running-in

The moving parts of a newly manufactured Dynaudio loudspeaker have been acoustically checked after production, but nevertheless are not as flexible as they need to be for optimum results to be realised. The higher the quality of any driver system, the more demanding the loudspeaker will be regarding time for running in the system.

A newly unpacked Dynaudio loudspeaker therefore requires several weeks running/ playing to reach its optimum performance capability. After that period, a couple of minutes before every listening session will be helpful to “warm up” the loudspeakers.

Maintenance

Dynaudio speakers don't require any special treatment apart from the kind of care that you would invest in any valuable items in your home.

Use a soft, dry or very slightly damp cloth to clean the cabinet and other non-functional components. You should always avoid touching the tweeter dome. Dust can be removed from bass and midrange driver diaphragms using a soft brush. Fabric grilles are best cleaned with a soft brush. We do not recommend use of any cleaning or polishing fluids or sprays. If you do use such substances, however, they are best applied to a cleaning cloth rather than directly to the speaker cabinets. It is wise also to test cleaning products on a small area of either the back or underside of the cabinet first. Don't let any cleaning products touch the driver diaphragms.

Follow these links to Dynaudio support articles for more information on speaker care

- [How to clean speaker cabinets](#)
- [How to clean woofer cones](#)
- [How to clean tweeters](#)

Warranty

Dynaudio provides a transferable limited manufacturer's warranty. This warranty only covers faults or defects in materials and production. Damage caused as a result of abuse, misuse or defective electronics isn't covered.

All warranty claims must be accompanied by a copy of the original purchase invoice, and warranties are only valid in the country or market of original origin or distribution. Should warranty service be required, it must be arranged for in the country of purchase by an authorised Dynaudio dealer.

DYNAUDIO

Focus

Designed and engineered by Dynaudio Labs in Denmark

Dynaudio A/S
8660 Skanderborg
Denmark

[dynaudio.com](https://www.dynaudio.com)

© 2022 Dynaudio A/S
All text and image copyrights reserved.
Subject to change without notice.

Document last updated: 2022-07-20